



PT2060-CFG System Configuration Software

General Information

PT2060-CFG is the “easy to use” system configuration software tool used to set up and monitor the PT2060 system. The software requires Windows XP or Windows 2000 operating system. PT2060- CFG provides the following functions:

System Configuration

- ✓ System Setup
- ✓ Rack Communication
- ✓ Modbus Communication
- ✓ Calibration of the system, module and channels

Module Configuration

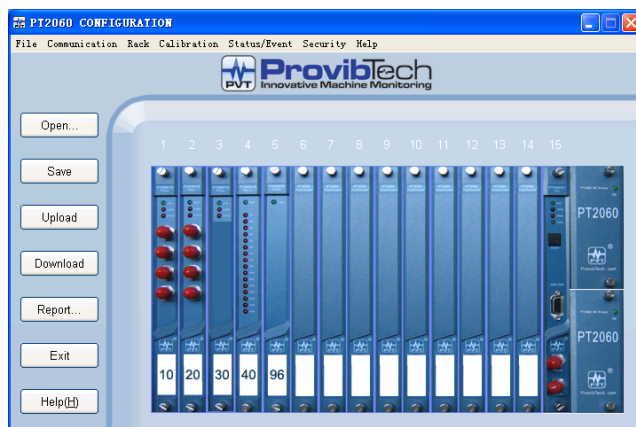
- ✓ Trip Multiply
- ✓ Bypass
- ✓ Alarm Reset

Channel Configuration

- ✓ Full Scale Range
- ✓ Alarm Set- Point
- ✓ Calibration of the System

Reporting

- ✓ Alarm and System Events
- ✓ Real-Time Values
- ✓ Channel, Module and Rack Status



Ordering Information

PT2060-CFG-AX

- A0: Configuration software CD include USB to RS232 converter driver
- User Manual

Optional Accessories:

PT2060-009100

SCALANCE X-108: 8-port industrial unmanaged Ethernet switch, wide temp. Produced by Siemens Co., Ltd. The switch is used to connect many computers and other network device. It can provide 8 Ethernet ports, and support 10/100M. Provibtech suggests that user should choose two TM900 which provide redundancy 24VDC power for PT2060-009100(SCALANCE X-108).

Feature:

- Provides 8 Fast Ethernet ports with Auto MDI/MDI-X
- Supports 10/100Mbps Auto Negotiation
- Provides compact size with DIN-rail/ Wallmount
- Supports redundant 18 - 32 VDC power input
- Diagnosis on device by means of LEDs (power, link status, data traffic) and signal contact
- Simple fault signal contact set-up using the SET button
- Supports wide operating temperatures from -20 to 70°C

PT2060-009101

USB to RS-485 Converter with PT2060-009106-A00 communication Cable.

PT2060-009102

USB to RS-232 Converter with PT2060-009107 -A00 cross communication cable.

PT2060-009103

RS-485 HUB

PT2060-009104-AXX

Hub to PT2060/91/96 Ethernet internet Cable RJ45

AXX: Cable length

A00: 3 meters (9.8 ')

A01: 15 meters (49.2 ')

A02: 75 meters (246 ')



PT2060 Monitor

PT2060-009105-AXX

PLC, DCS to Pt2060/91/96 Ethernet direct communication Cable RJ45 Port

AXX: Cable length

A00: 3 meters (9.8 feet)
A01: 15 meters (49.2 feet)
A02: 75 meters (246 feet)

PT2060-009106-AXX

USB to RS-485 Converter to PT2060/91/96 serial communication Cable RS-485

AXX: Cable length

A00: 3 meters (9.8 feet)
A01: 15 meters (49.2 feet)
A02: 100 meters (328 feet)

PT2060-009107-AXX

PC to PT2060/91/96 cross serial communication Cable RS-232

AXX: Cable length

A00: 1.5 meters (5 feet)

PT2060-009108-AXX

PT2060/91/96 to RS485 HUB cable RS-485

AXX: Cable length

A00: 3 meters (9.8 feet)
A01: 15 meters (49.2 feet)
A02: 100 meters (328 feet)

TM900-GX

TM900 is used to provide 24VDC power with PT2060-009100(EKI-2528I), please refer to appendix for detail.

GX: Mount

G0: 35mm DIN-rail mount

G1: Plate mount