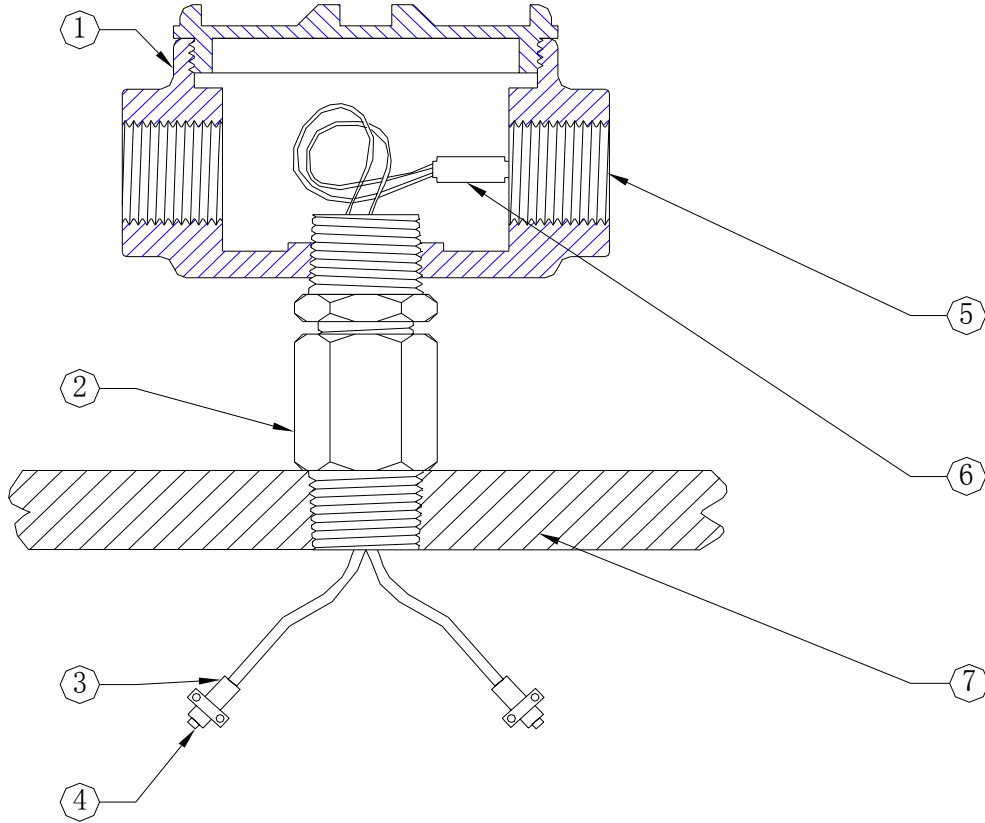




### TM090X Probe Mounting Accessories Kit

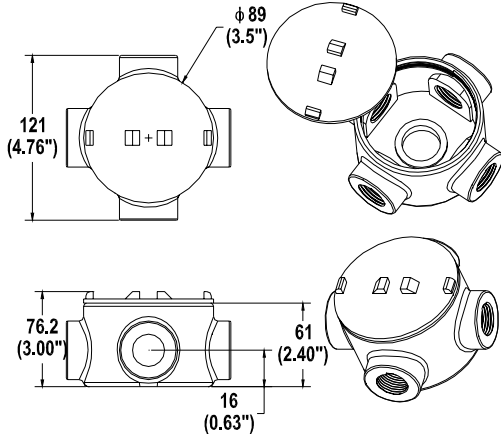


1. TM0903: Junction Box
2. TM0902: Low pressure Cable Seal
3. Probe
4. TM0906: Probe Bracket
5. TM0904 Flexible Conduit/PT500-19 Cable Seal/PT500-18 Seal
6. TM0920-BOOT: Connector Protector
7. Machine Case



**Order Information**

**TM0903-A01-BX-CX**



**Junction box 1 with blank cover**

Fitting Size: 3/4-14 NPT, 5 holes  
Class I, Div.1 & 2, Groups C & D  
Class II, Div.1 & 2, Groups E, F & G  
Class III

BX: PT500-18. 3/4" NPT Plug

X = Number of plugs

CX: PT500-19. Cable Seal

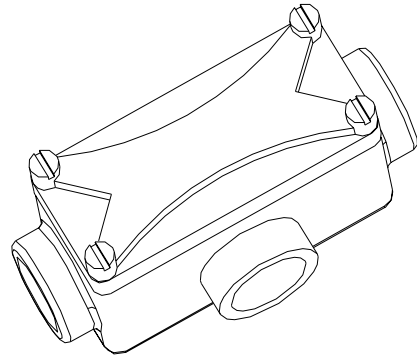
X = Number of cable seals

**PT500-18**

3/4" NPT Plug



**TM0903-A02-BX-CX**



**Junction box 2**

Class I, Div.1 & 2, Groups C & D  
Class II, Div.1 & 2, Groups E, F & G  
Class III

Conduit size: 3/4-14 NPT, 3 holes

Depth: 28 mm (1.1")

Width: 38 mm (1.5")

Length: 95 mm (3.75")

BX: PT500-18. 3/4" NPT Plug

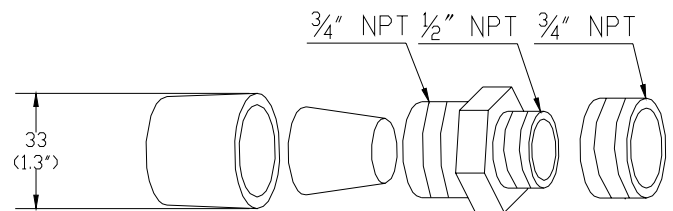
X = Number of plugs

CX: PT500-19. Cable Seal

X = Number of cable seals

**PT500-19**

Cable Seal





**Order Information Continued**

**TM0904-AXX-BXX**

Flexible Conduit  
Class I, Div.1 & 2, Groups A, B, C & D  
Class II, Div.1 & 2, Groups E, F & G  
Class III



AXX: Fitting size

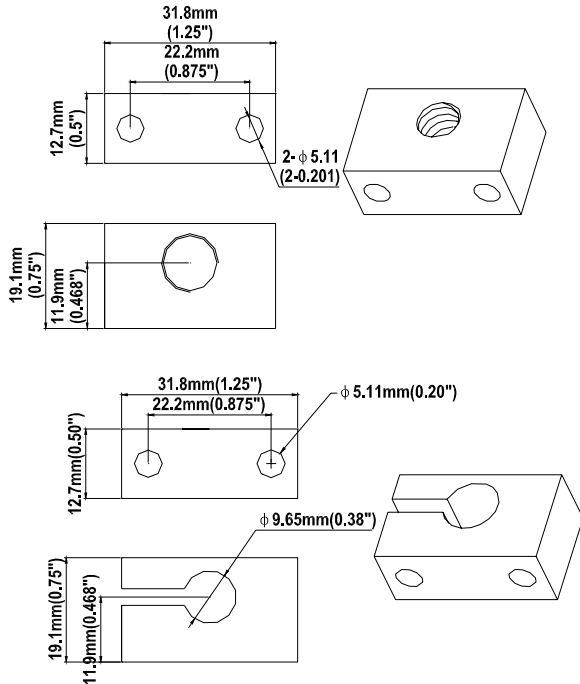
- A01: 1/2"-14NPT assembly
- A02: 3/4"-14NPT assembly

BXX: Length

- BXX: XX feet  
(XX = 4, 6, 8, 10, 12, 15, 18, 21, 24, 30, 36)

**TM0906-AXX-BXX**

Aluminum probe mounting bracket



**TM0906-AXX**

AXX: Probe thread size

- A01: 3/8-24 UNF  
(with two 10-24 UNC mounting screws)
- A02: 1/4-28" UNF  
(with two 10-24 UNC mounting screws)
- A03: M8×1  
(with two M5 mounting screws)
- A04: M10×1  
(with two M5 mounting screws)
- A05: Clamp for M10 or 3/8-24  
(with two M5 mounting screws)
- A06: Clamp for M10 or 1/4-28  
(with two 10-24 UNC mounting screws)

**TM0902-AXX**

Low pressure Cable Seal



AXX: Thread size on both ends

- A01: 1/2"-14 NPT
- A02: 3/4"-14 NPT

The same thread size must be used on both ends. The grommet will hold up to four cables. One hole is punched and the other three are partially pre-drilled.

